

0.5mL

METAL POULTRY INJECTOR



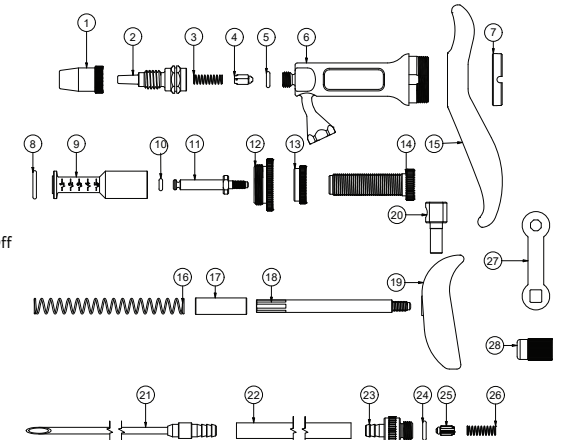
njphillips™
DATAMARS

- A highly accurate, quality metal device.
- Calibrated barrel to administer in reliable 0.1mL increments.
- Supplied with draw-off spear and feed tube.
- Positive dose locking mechanism.

0.5mL Metal Poultry Injector Parts Breakdown

SPARE PARTS KITS AVAILABLE

Product	Code	SAP Code	Part No.
Major Service Kit	WX1380	850 0000-431	3 (x2), 4 (x2), 5, 8, 9, 10, 24
1. Needle Nut	11. 0.5mL Piston	21. Inlet Adaptor/ Draw Off Needle Assembly	
2. Needle Mount Luer	12. Barrel Lock Nut	22. Feed Tube P.V.C.	
3. Spring	13. Lock Nut	23. Inlet Adaptor	
4. Valve and Seal Ring	14. Thread Dose Adjuster	24. Seal Ring (010-S70)	
5. O-Ring (008-N70)	15. Finger Grip	25. Valve and Seal Ring	
6. Barrel Cover Assembly	16. Return Spring	26. Spring	
7. Lock Ring	17. Spring Cover	27. Needle Hub Spanner	
8. O-Ring (013-V75)	18. Pushrod	28. Needle Nut	
9. 0.5mL Barrel	19. Push Grip		
10. O-Ring (BS005-S70)	20. Pushrod Adapter (Brass)		



Product	Dose Range	Increments	Material	Packaged Dimensions (WxHxD)	Packaging Type	Code	SAP Code	EAN Barcode	UPC Barcode
0.5mL Metal Poultry Injector	0.1mL - 0.5mL	0.1mL	Metal	175 x 112 x 36mm	Box	PAS985	850 0000-427	9 323837 001714	8 12465 01236 4

For more information, email: ahdsinfo@datamars.com or phone toll free (Australia): 1800 247 175

www.njphillips.com